

# 2025 Box Canyon Creek Bull Trout Passage

September 17, 2025





# Yakima River Basin

★ = Bull Trout Passage Locations





Kachess Reservoir

Dry

Box Canyon Creek





























# Box Canyon Creek Flume and PIT Array Locations

Box 1 antenna

Box 2 antenna

submersible antenna

flume

Picture taken 10/19/23 by RID







Box Canyon Creek  
PIT Tag Detector



# Issue: Channel braiding

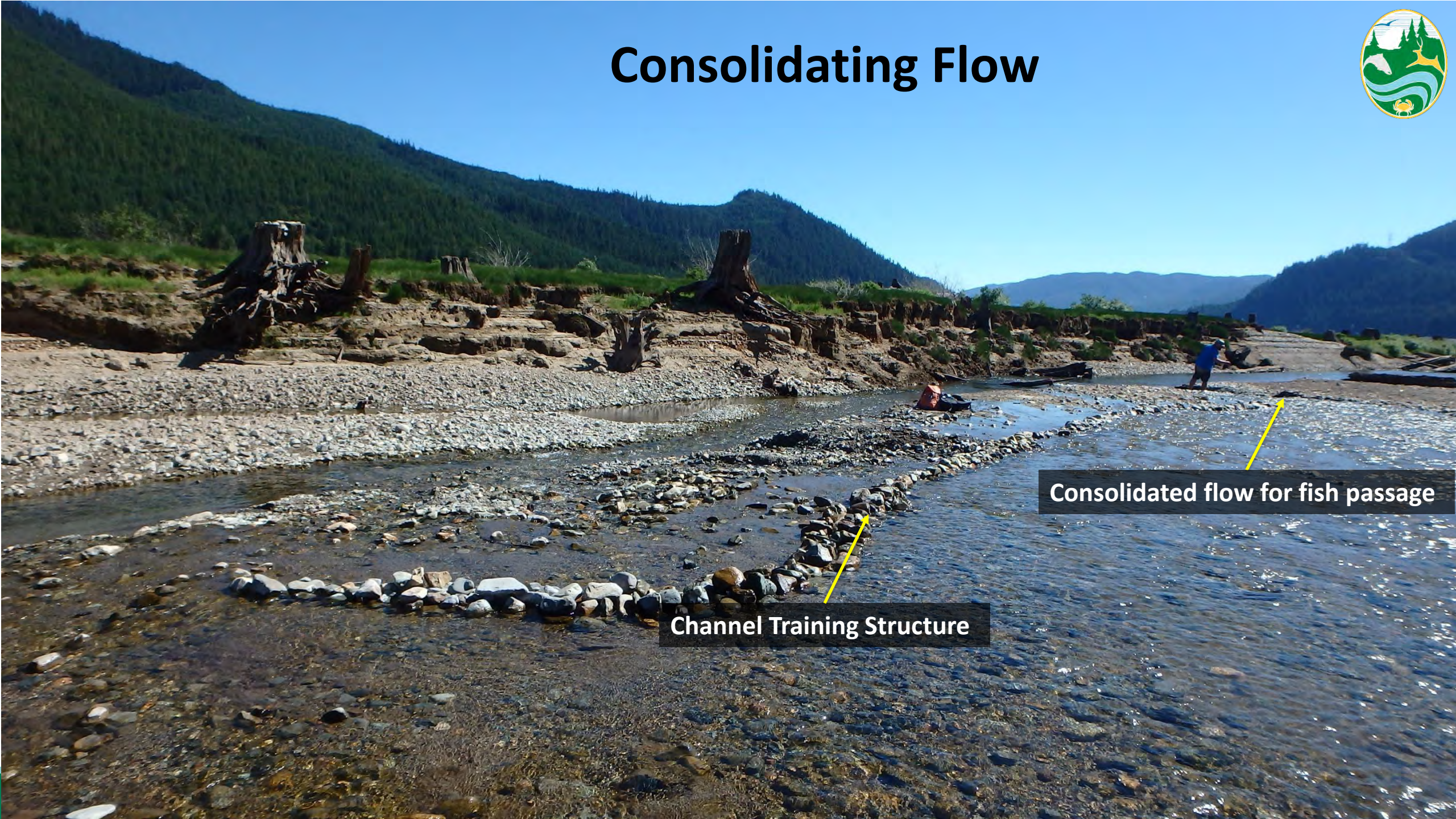
Looking upstream. Keechelus







# Consolidating Flow



Consolidated flow for fish passage

Channel Training Structure



# Gold Creek



**Issue: Low water depths and high-water temperatures**





# Illegal Off-Roading





# Illegal Off-Roading





# Bureau of Reclamation, Pacific Northwest Region

## Major Storage Reservoirs in the Yakima River Basin



07/09/2024

July 9, 2025





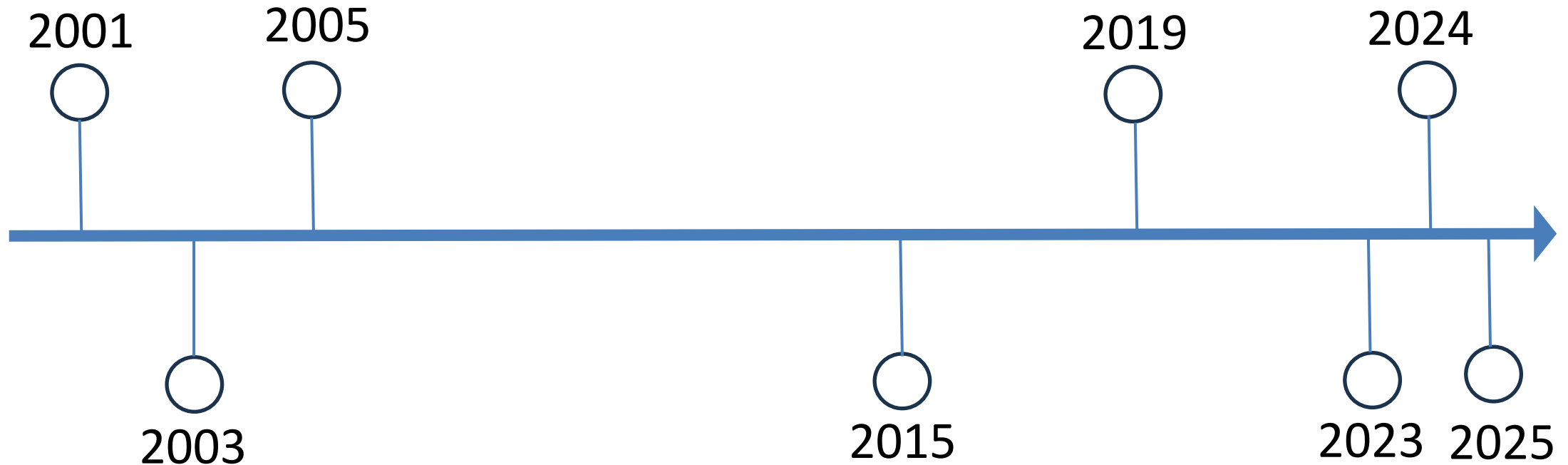
# October 17, 2025





# How often have we constructed the Box Canyon passage structure?

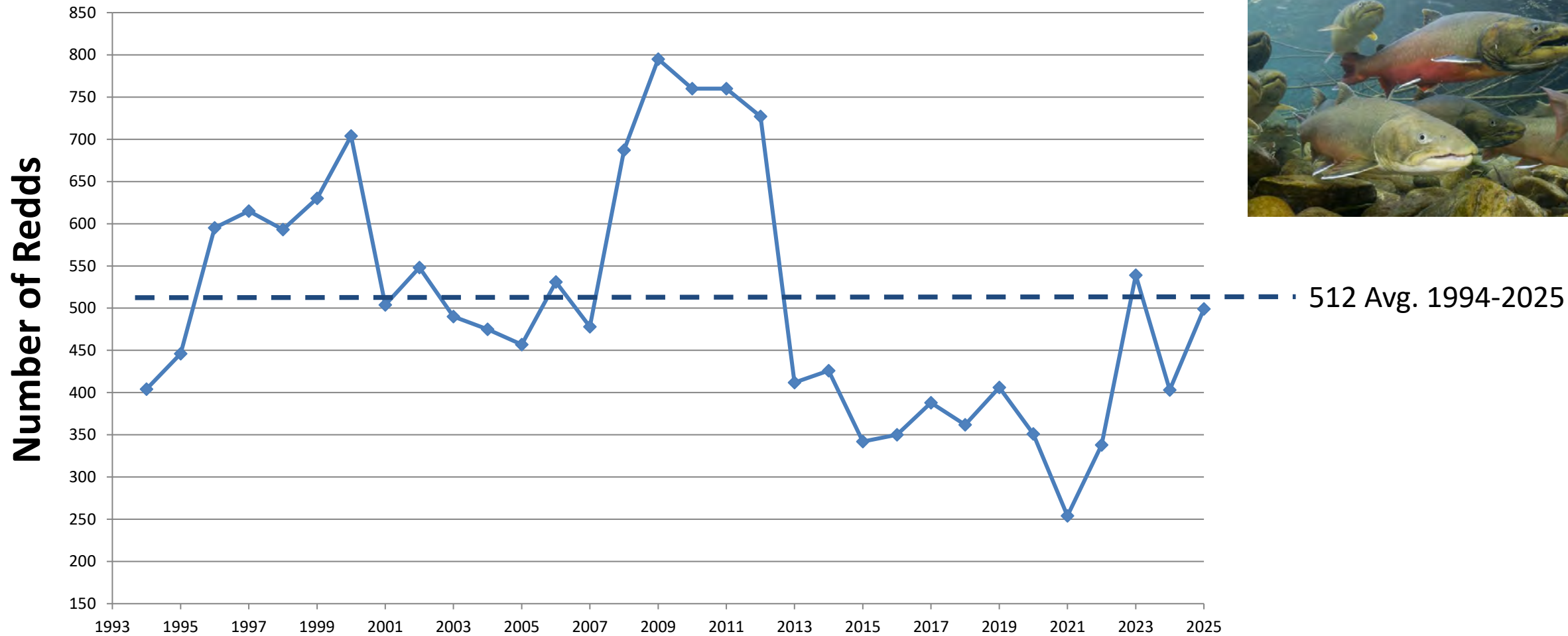
8 Times, in 25 Years





# Yakima Basin Bull Trout Redd Counts

## 1994-2025

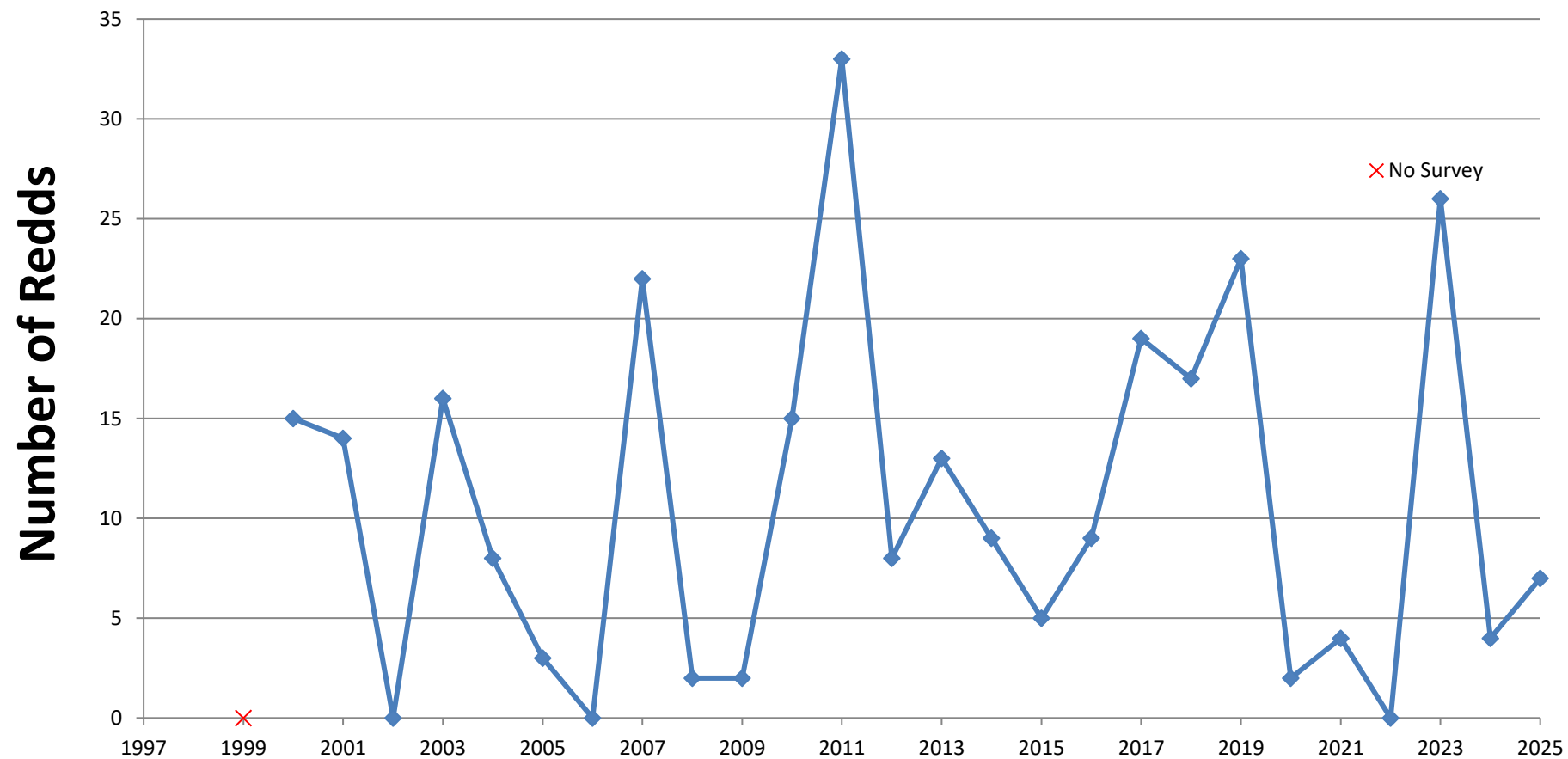






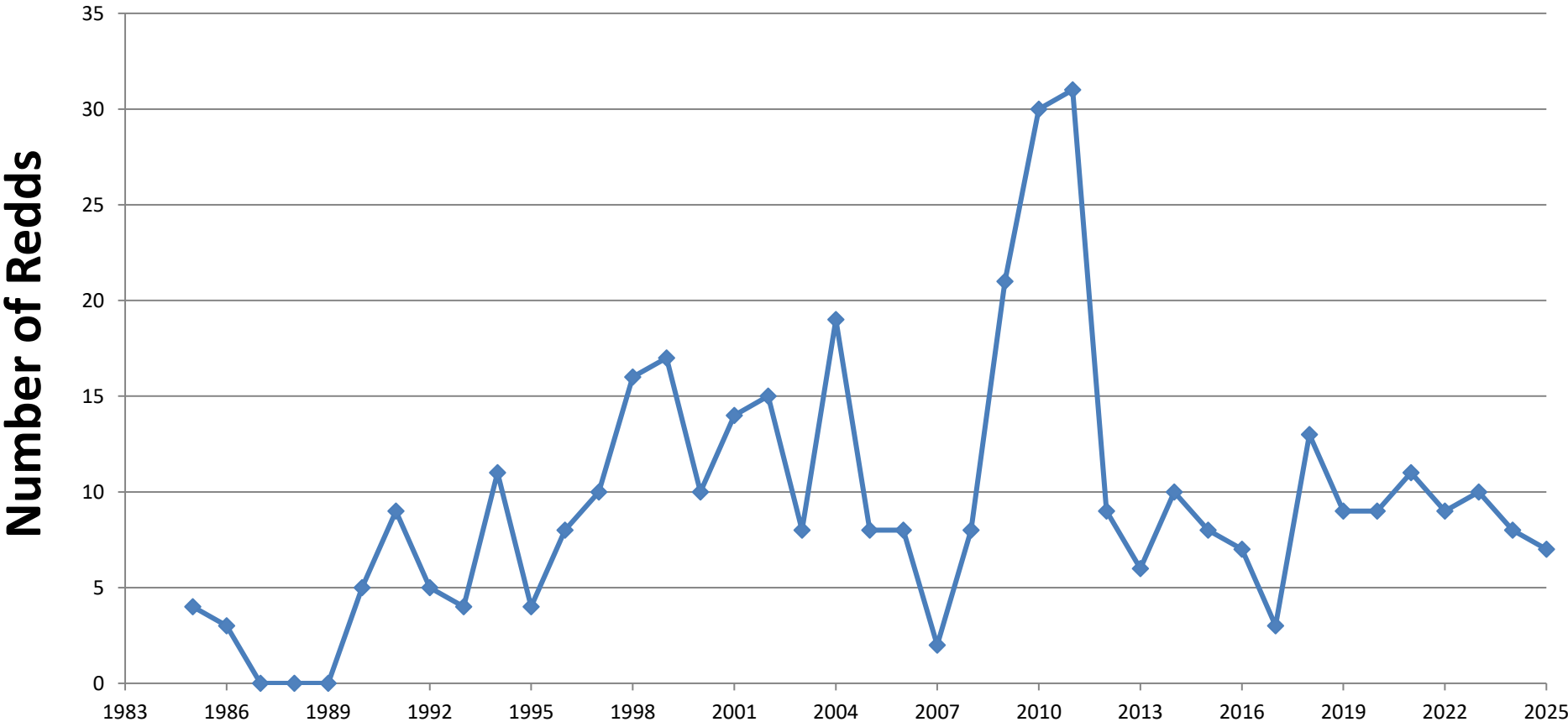
# Kachess River Bull Trout

## Annual Redd Counts 1998-2025





# Box Canyon Creek Bull Trout Annual Redd Counts 1984-2025





# Why do we monitor fish passage conditions?

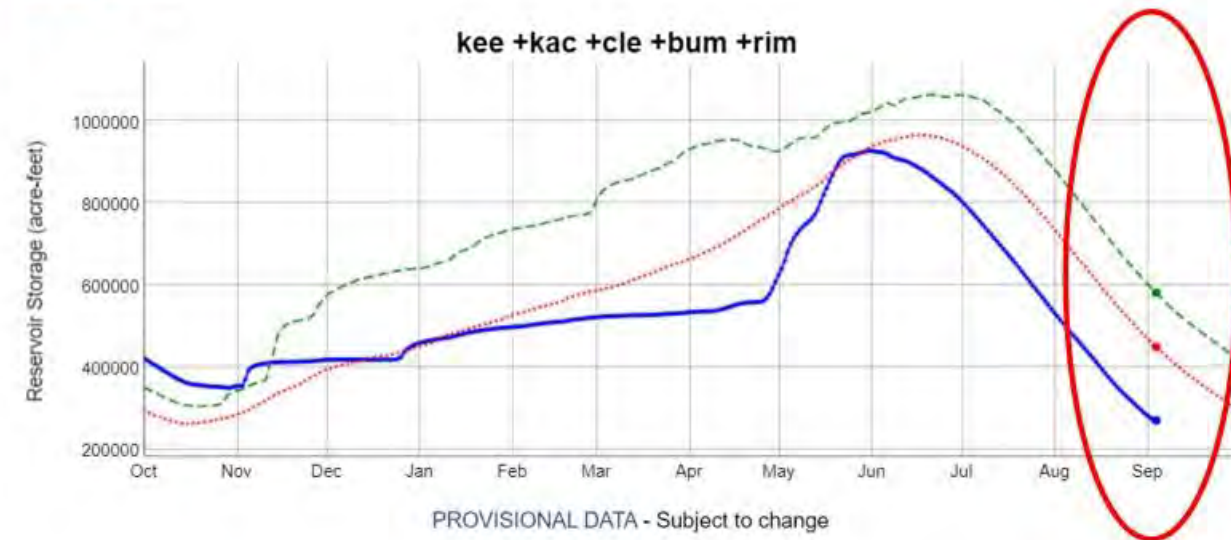
## Water Year Graph

Sep:

**Current Year:** 269578.75

**Previous Year:** 581515

**Average:** 449280.32



09/08/2023 Hydromet Water Year Graph

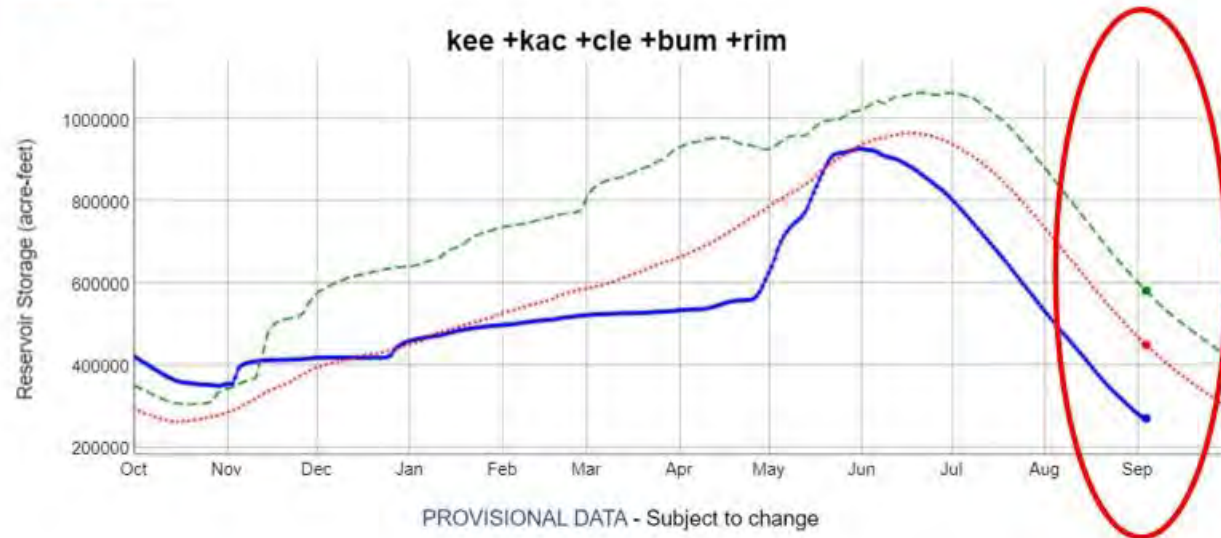




# Why do we monitor fish passage conditions?

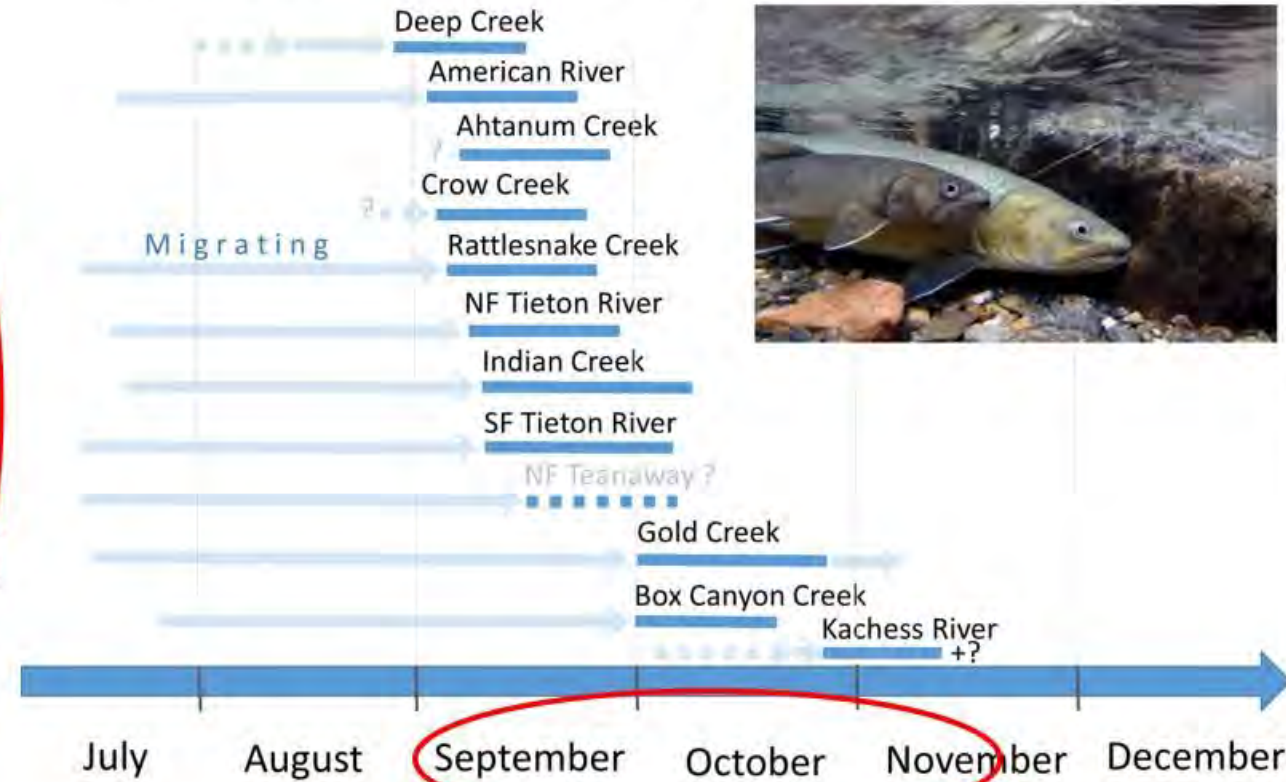
## Water Year Graph

Sep:  
Current Year: 269578.75  
Previous Year: 581515  
Average: 449280.32



09/08/2023 Hydromet Water Year Graph

## Yakima Basin Bull Trout Migration & Spawn Timing



WDFW: William Meyer





# Rescuing Bull Trout

Photo by the Daily Record





# Bull Trout Rescue, Rear, and Release

## 2019 to Present

Fry Arrive, August



**~2,709 Bull Trout  
fry reared**

9 Months later, May



Releasing Juvenile Bull  
Trout in Lake Kachess



**1,302 Bull Trout  
juveniles released**

\* Mortality largely avoided after first year



# PIT Tagging Bull Trout





# Yakama Nation Rescue, Rear and Release Program



- **2018** - Hatchery rearing
  - Began feeding experiments
  - Adaptive management
- **2017-2025** - A total of 6,100 Bull Trout rescued, beginning in 2018 approximately half of the fry were brought into hatchery.
- **2018-2025** - A total of 2712 rescued fry reared with 1,302 released, average facility survival of 78%. Since the first year of rearing, 2019, survival at 13%, the survivals have averaged 94%.
- **2024** - The first spawning age fish were detected in Box Canyon and Kachess River. A total of 24 detections
- **2025** - Detections continued, with 22 in Box Canyon in which 8 were later detected in Kachess River.



# Kachess River Rescued Bull Trout returning as adults! October 2025

Video compliments of  
Aimee Taylor, MCF!





# Thank you to all the partners!



— BUREAU OF —  
RECLAMATION





# Trout Unlimited and the Yakima Basin

**Justin Bezold**  
**December 10, 2025**

**Every River  
Needs A Champion**

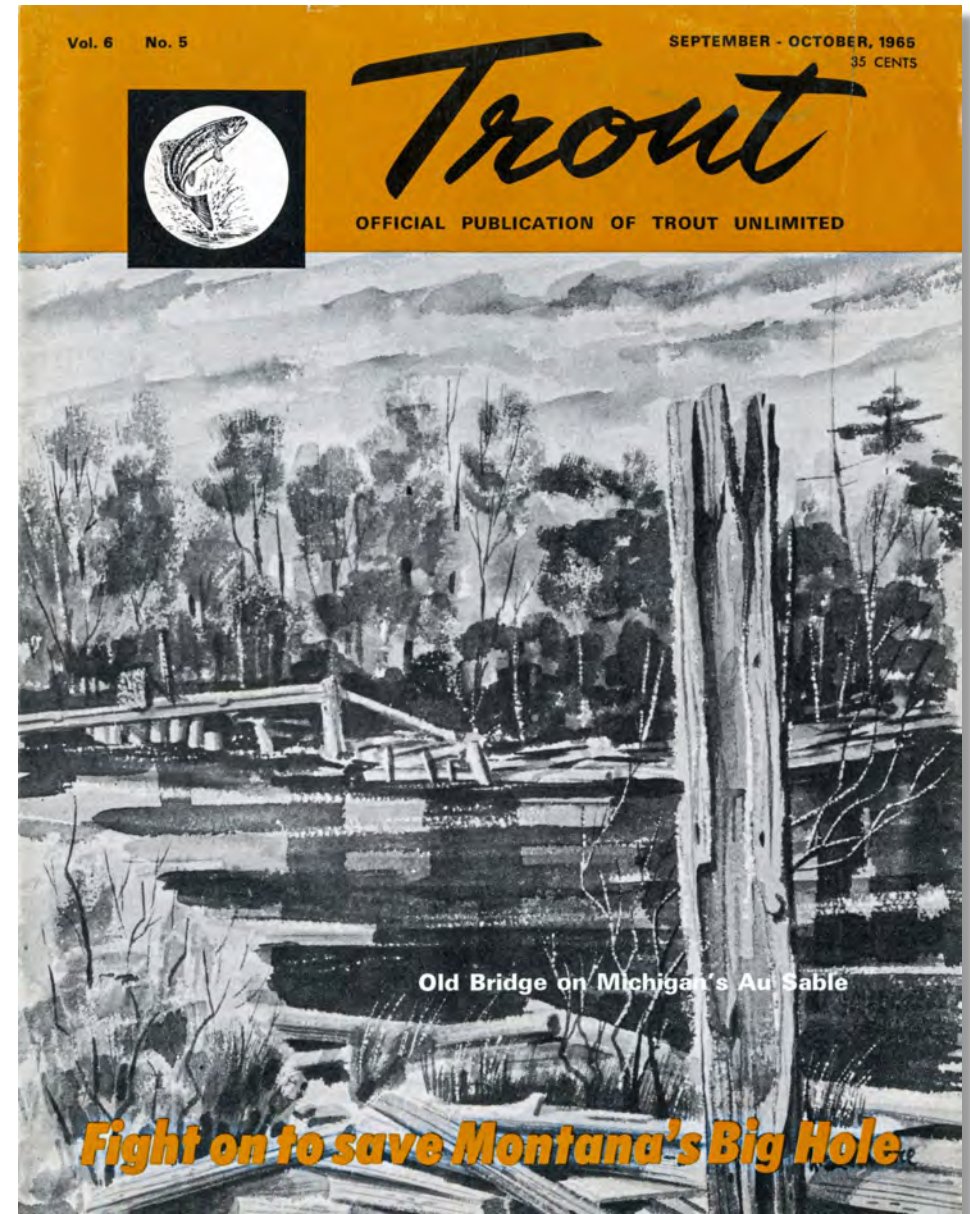




# By history and by nature, we are optimists.

Trout Unlimited: founded in 1959 near Michigan's Au Sable River by anglers with a vision of wild trout.

Trout Unlimited is the nation's leading non-governmental conservation group working to care for and recover rivers and streams and their trout and salmon populations.







# One TU

## Staff and grassroots working together

- 350+ staff biologists, policy experts, and professional conservationists living and working in local communities across the nation
- 15,000+ dedicated volunteers in 400+ councils and chapters
- 350,000 members and supporters nationwide

**Every River  
Needs A Champion**







# Washington TU

- 25+ staff statewide
- Support in Olympia and Washington DC
- Over 2500 grassroots members
- 4 staff focusing on the Yakima Basin
  - Theo Burgoon
  - Justin Bezold
  - Erin Eaton
  - Ryan Lefler

**Every River  
Needs A Champion**





# What we do – Eastern WA

We work in the places we live and partner with neighbors.

We focus on water to restore rivers and streams.

We focus on fish and people and healthy ecosystems.

We focus on our part and offer solutions to complex issues.







# YBIP Partner

## Commitment to the Future

- Policy + Projects + Partnerships
- Executive and Subcommittee member
- Committed Partner with dedicated staff
- Cost-effective, flexibility to work throughout the basin

**Every River  
Needs A Champion**







2019 / THIRD EDITION

# LANDOWNER'S GUIDE TO WASHINGTON WATER RIGHTS

## Outreach

- Directly with landowners, water users, irrigation districts, etc.
- Confidential discussions about water use and project goals
- *Non-regulatory*

**Every River  
Needs A Champion**





# Water For Fish and People

**Almost 20 years of water purchases, leases, and beyond**

- Permanent acquisitions – flow + diversion closures
- Annual and Multi-year Leasing
- Stream Supplementation Partnerships
- Diversion Reductions







# Bateman Island

## Marina removal

- Found manageable approach and worked with funders, marina owners, and governments to remove marina
- Required contracting expertise, flexibility, and creativity
- Proud to help with a much larger effort for fish

**Every River  
Needs A Champion**





# Tjossem Ditch

## Multi-year partnership for fish survival

- Retire aging Yakima River ditch (>12 cfs) for floodplain and flow benefits near Ellensburg
- Water for fish, Kittitas County, and irrigators
  - Water acquisitions
  - Diversion changes
  - Water conservation
- *Headgate and ditch removal*





# Swauk Creek

## **Piping for fish and farms and fire protection**

- Replace and improve existing pipeline to improve flows in lower Swauk Creek
- Planned to provide ~10 cfs during low flow periods
- Possible due to success of KRD Streamflow Supplementation and partnerships





# Water Marketing

## **Facilitating water right transfers for fish and community benefits**

- Smart Market Pilot Implementation – electronic matching of buyers and sellers
- Multi-benefit water right acquisitions
- Precise and flexible tool available when we need it





# Lower Yakima River

## Flow and passage for fish

- Low flows and water quality issues impact fish habitat
- Water leasing and diversions reductions to help with pulse flows
- Partnerships with irrigation districts – water conservation and diversion changes

**Every River  
Needs A Champion**





# Basin-wide Passage

When improved flow isn't enough (or possible)

- Box culvert on Cold Creek
- Multiple culverts on Crystal Creek
- Culverts on Williams Creek
- Naches Subbasin . . . to be determined



# Made Possible with Support From:

- Washington Department of Ecology:
  - Office of Columbia River – YBIP (Habitat, Groundwater, Water Use, Market Reallocation)
  - Streamflow Restoration Grant Program
  - Water Resources Program
- National Fish and Wildlife Foundation's Columbia Basin Water Transactions Program (NFWF-CBWTP)
- Resources Legacy Fund
- US Fish and Wildlife Service, US Forest Service
- *YBIP Partners*



## Every River Needs A Champion



**Please  
contact  
any of  
us at:**

Theo Burgoon (director)  
[Theo.burgoon@tu.org](mailto:Theo.burgoon@tu.org)  
509-630-6858

Erin Eaton  
[Erin.eaton@tu.org](mailto:Erin.eaton@tu.org)  
509-607-4354

Justin Bezold  
[Justin.bezold@tu.org](mailto:Justin.bezold@tu.org)  
509-881-5464

Ryan Lefler  
[Ryan.lefler@tu.org](mailto:Ryan.lefler@tu.org)  
509-394-3656



**Every River  
Needs A Champion**



# YAKIMA BASIN INTEGRATED PLAN

*Protecting water for our farms, fish, and communities*



## Update on Watershed Lands Conservation Subcommittee Efforts on YBIP Land Acquisitions

Peter Dykstra, Chair WLCSC

YRBWEP Workgroup

December 10, 2025





# Watershed Lands Subcommittee

Established in 2012

- Purpose: To advise the YRBWEP Workgroup on options for implementing the Targeted Watershed Protection and Enhancement element
- Membership includes Yakama Nation, Ecology, BuRec, Counties, TU, AR, TNC, USFS, DNR, DFW, and Irrigation Districts
- Consistent engagement from non-member interested parties
- Guided by two Lands Plans – Phase 1 (2012) and Phase 2 (2021)



# Watershed Lands Conservation Subcommittee



- Chair – Peter Dykstra
- WDFW - Mike Livingston/Jeff Tayer
- DNR - Larry Leach
- Yakama Nation - John Marvin
- KRD - Urban Eberhart
- American Rivers - vacant
- Ecology - Jeff Dermond
- Kittitas County - Cory Wright/Arden Thomas
- Yakima County - Kory Graafstra
- Reclamation - Brian Schmidt
- USFS - Scott Robinson/Kathryn Furr
- TNC - Darcy Batura/Justin Allegro



# Guiding Principles for Land Acquisitions

*Established in 2012 Plan*

- Acquire lands or easements only from willing sellers at fair market value.
- Maintain economic uses where lands have historically been used as working lands, where this is consistent with protection of key watershed functions and aquatic habitat.
- Maintain and, where possible, improve access to lands and enhance opportunities for a variety of recreational uses, where this is consistent with protection of key watershed functions and aquatic habitat.
- Restoration and management activities are essential and must be supported.
- Must work to ensure sufficient funding for stewardship and management.





# Forest Land Acquisitions in Phase 1 Plan (2012)

*Cap of 55,000 acres*

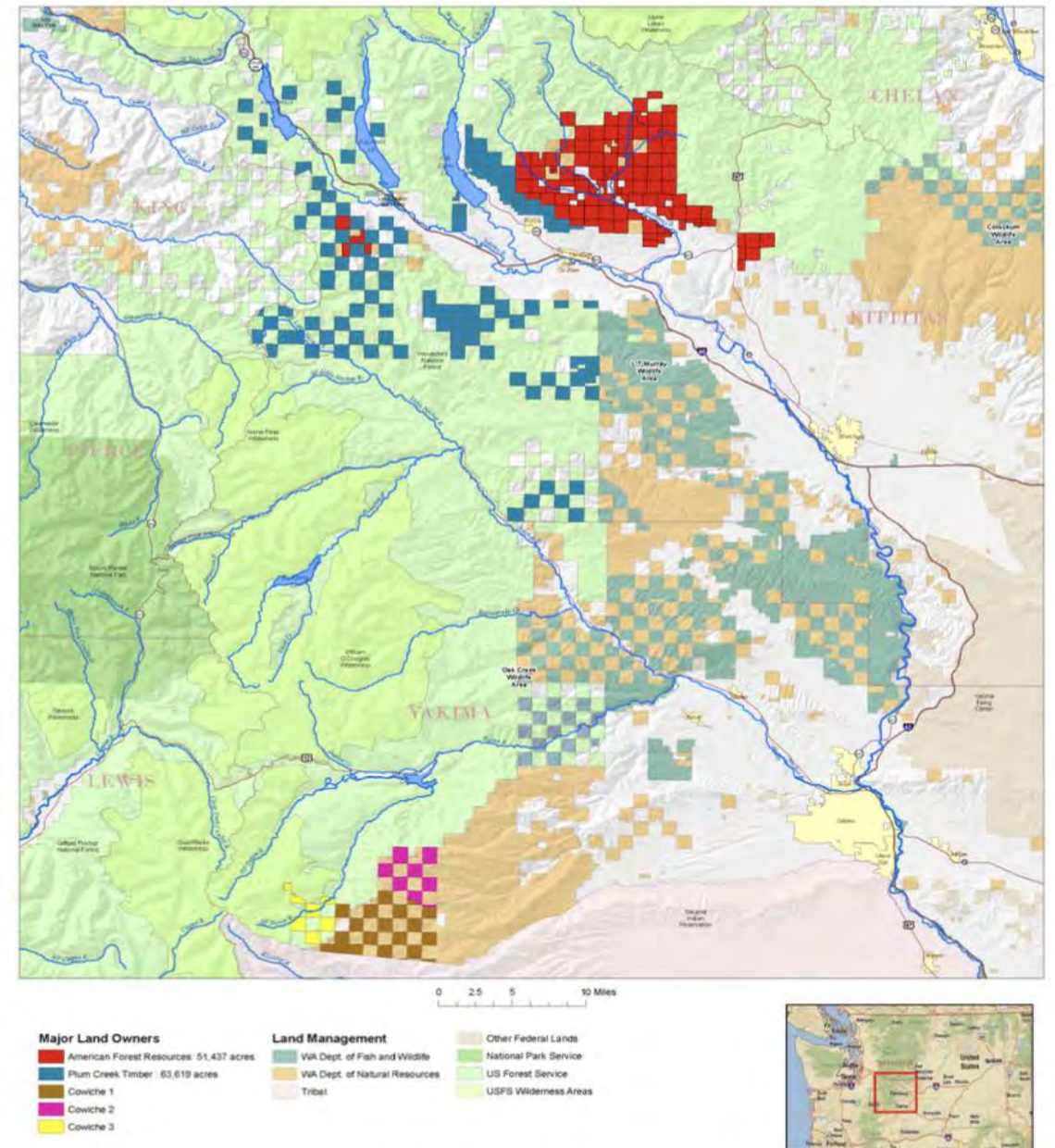


Figure 1. Options for Forest Land Acquisition.



# Shrub Steppe Acquisitions in Phase 1 Plan (2012)

*Cap of 15,000 acres*

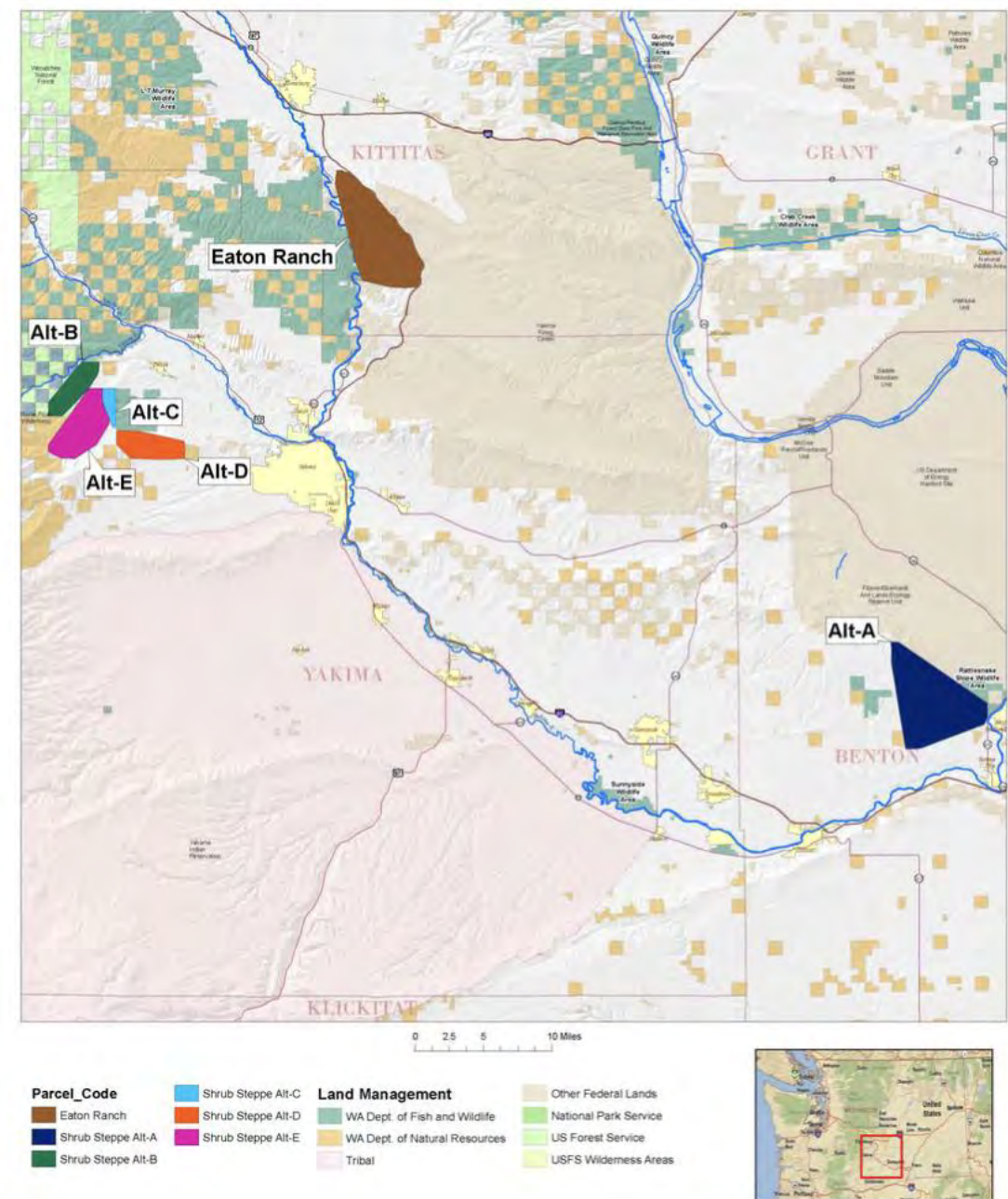


Figure 4. Options for Shrub-Steppe Habitat Acquisitions



# Phase 2 Plan (2021)

## Expanded Forest Land Acquisition Targets

## Maintained Shrub Steppe Goal



Figure 1. Land Acquisition Opportunities

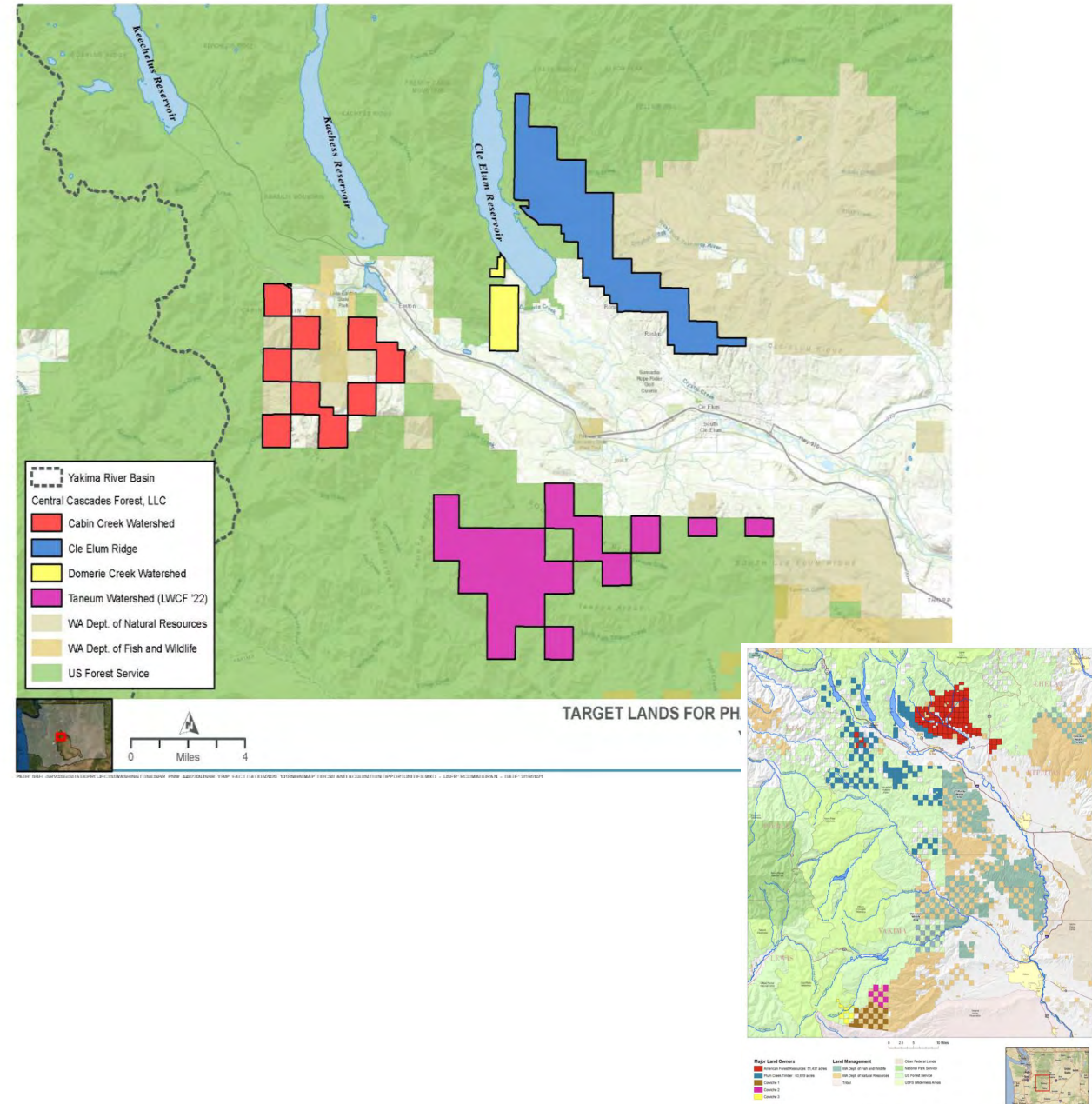


Figure 1. Options for Forest Land Acquisition.



# YAKIMA BASIN INTEGRATED PLAN

*Protecting water for our farms, fish, and communities*



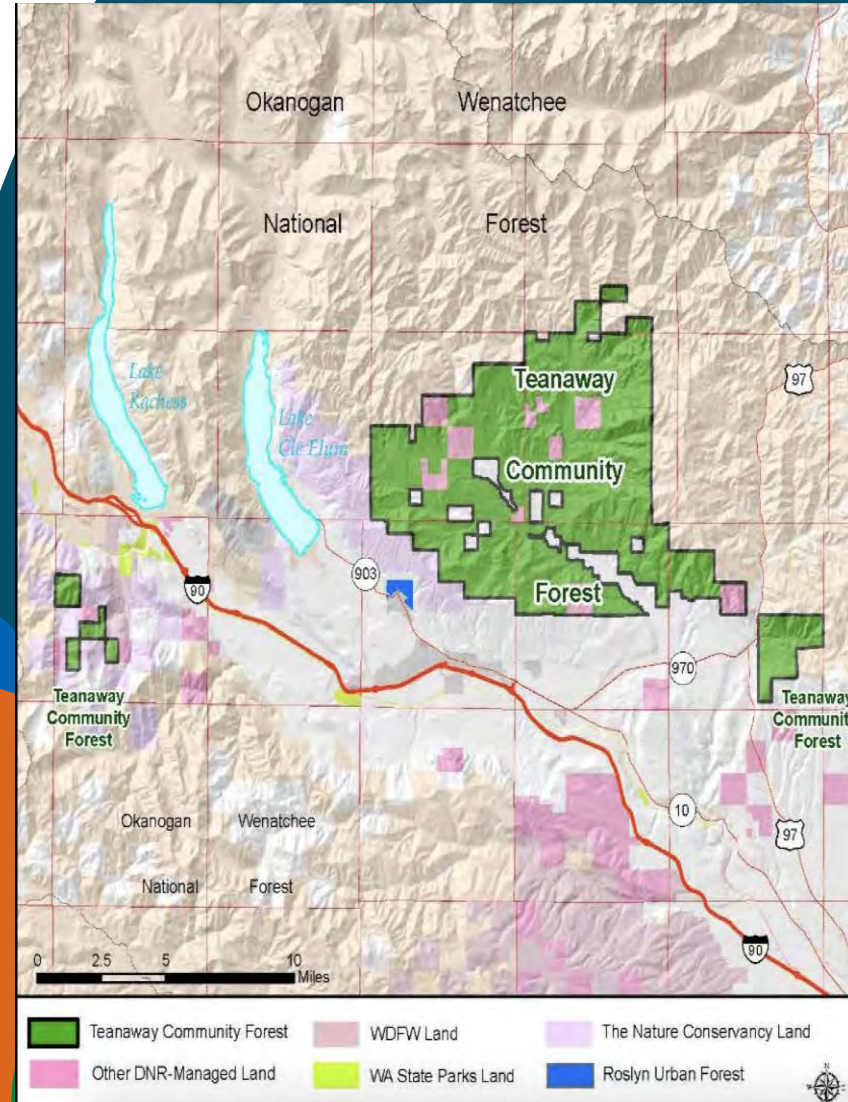
## Progress to date on YBIP Watershed Lands Plan

- \* 50,241 acres State-funded TCF(complete)
- \* 8,375 acres State-funded shrub steppe land (completed)
- \* 25,462 acres LWCF-funded to USFS (completed)
- \* 647 acres LWCF-funded to BLM (completed)
  
- \* 5,870 acres Forest Legacy to DNR (funded)
  
- \* 9,700 acres Cle Eum Ridge (funded)



# Teanaway Community Forest

- Purchased in 2013.
- Funded by \$100M proviso.
  - Linked to YBIP Water Supply.
  - Included \$10M DNR Loan.
  - June 30, 2025.
- Owned by DNR with DFW Easement.
- Managed collaboratively.
  - Partnership with Advisory Committee.
  - Multiple planning efforts.
- Extensive restoration efforts ongoing across TCF.





# TCF and 2025 Legislature

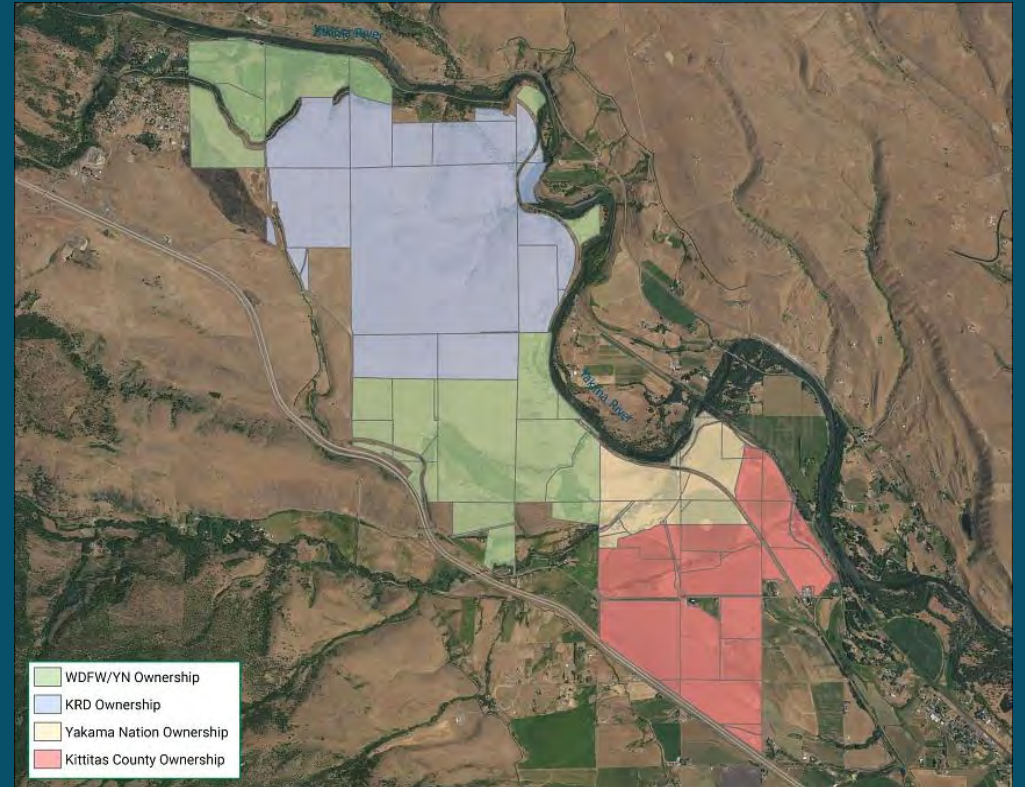
- Pursued Legislature to Extend Water Supply Facility Permit Milestone.
  - ESSB 5303 passed and was signed into law.
  - Milestone is now permit and funding of 214,000 af of storage by June 30, 2035.
- Worked with DNR to secure funding to pay off \$10M DNR loan.
- Operating budget funding for stewardship and management funding continues to be a challenge.





Land acquisition is more than just land conservation in YBIP.

- Multiple habitat projects required acquisition to succeed.
- Eaton Ranch/Wymer Reservoir negotiations.
- Springwood Ranch purchase.



Conservation is evolving with the rest of YBIP and learning from our work together.



# YAKIMA BASIN INTEGRATED PLAN

*Protecting water for our farms, fish, and communities*



Questions?



# MIKE SHANE

---

THE YBIP FAMILY THANKS YOU FOR YOUR SERVICE!

39 YEARS IN THE WATER BIZ!









ES ROLL!

Only Tap Water  
Delivers

CITY OF YAKIMA  
WATER/IRRIGATION

Mike





















Mike

CITY OF YAKIMA  
WATER/IRRIGATION

WE RECYCLE

ALTIDS



